

E-Mail: [sales@modsurplus.co.uk](mailto:sales@modsurplus.co.uk)

[Home](#) | [Previous Page](#)



**REQUEST A QUOTE**

or call us on **UK +44(0)1302-954007** or **UK +44 (0)1909-515168**

**Social Media Link**

**Description / Ref**

**Pinzgauer Vector 718 6x6 Armoured Patrol Vehicles - 50377**

Photo (a gallery of photos is provided below - *where available*)



**Details**

**Pinzgauer Vector 718 6x6 Armoured Patrol Vehicles**

Recently released direct from military reserve stores in excellent condition having done only 1,000-5,000 Kilometres

The Vector is based on the Pinzgauer (6 × 6) chassis which has been fitted with a new armoured body

The armoured floor offers greater blast and roll over protection

The torsion resistant central tube chassis incorporates the transfer case and lockable differentials with portal hubs on swing axles offering enhanced mobility

All vehicles are in a right-hand drive configuration with the vehicle commander normally occupying the left seat. Transparent armour windows are provided for forward and side observation with driver and commander being provided with a forward opening door.

The troop compartment is at the rear and normally consists of four people who can rapidly enter and leave the vehicle via two doors in the rear of the vehicle. The seats are fitted with 4 point harness seat belts. Additional seating in the rear could be fitted if required

Each of these doors is provided with a vision block to provide observation over the rear of the vehicle. There are also two large hatches in the roof which will allow two of the crew to have good all round observation.

A searchlight is mounted on the forward part of the roof which is controlled from within the vehicle.

Standard equipment includes power-assisted steering, anti-skid braking system, electronic traction control, run flat tyres and air conditioning system.

Standard equipment includes steps to front doors, grab handle for front passenger, exterior rear view mirrors, brush guard, fuel tank guard, fuel filter in tube, water separator, and NATO pintle towing device.

Videos (if available)

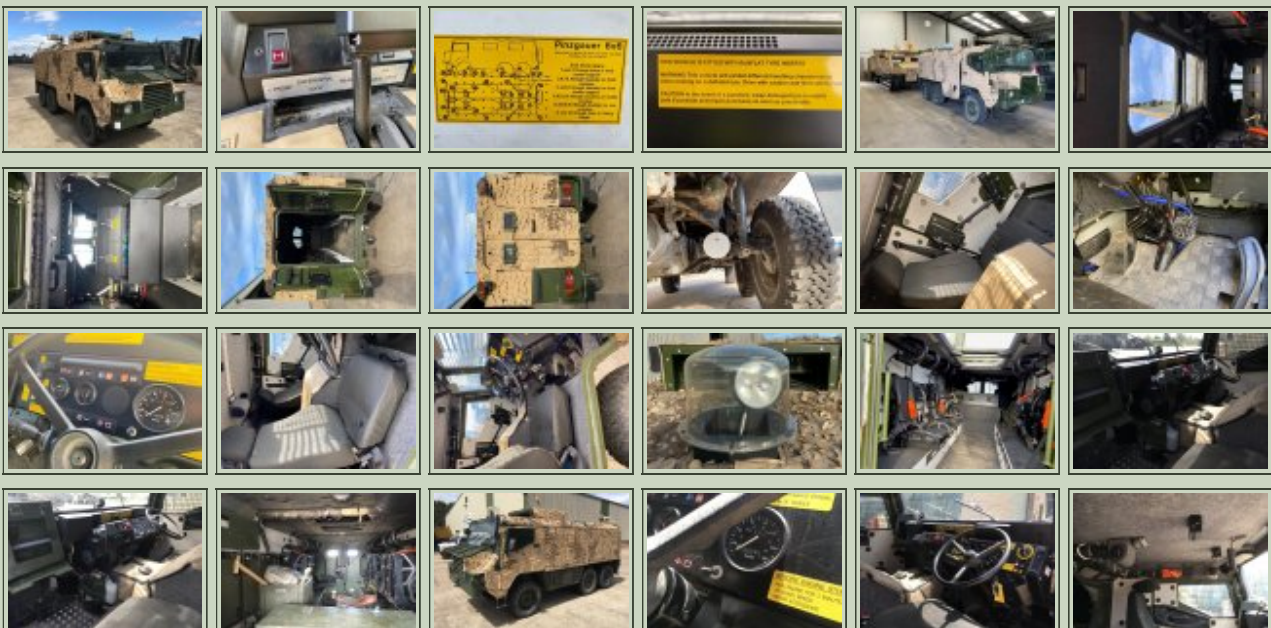
Category	Armoured Vehicles	Length	5.10m
Manufacturer	Pinzgauer	Height	2.40m
Engine	Volkswagen 5 Cylinder Diesel Engine	Width	2.00m
Gearbox	Automatic	GVW	6,000 Kg
Brakes		Hrs_Kms	1,000-5,000 Kilometres
Steering	PAS RHD	Date into Service	2007-2009
Tyres		Year of Manufacture	2007-2009
Max Load	1,600 Kg	Qty Available	20
Electrics	24 volts	Export Requirements <a href="#">...more</a>	SIEL Licence Required



**REQUEST A QUOTE**

or call us on **UK +44(0)1302-954007** or **UK +44 (0)1909-515168**

### Photo Gallery





■  
All prices quoted are GBP U.K. Pounds Sterling Ex. Works excluding VAT where applicable and shipping / associated costs.

■  
Vehicles advertised are subject to remaining unsold.

■  
All prices quoted are based on **"per individual unit"** purchased, any reductions on advertised price for multiple item orders is subject to negotiation and is conducted at the time of inspection or provision of LOI.

■  
For complete Terms & Conditions See Main Website

■  
Photo's shown above may represent a vehicle type rather than an actual vehicle, vehicles are available serviced and painted to customers preference

■  
An export licence may be required for items sold to customers outside of the U.K.  
**FOR MORE INFORMATION ON EXPORT LICENCING PROCEDURES**

[CLICK HERE](#)

**FOR INFORMATION ON CURRENT EU EMBARGOES**

[CLICK HERE](#)